

Westside Timbers Copa TS B02

Westside Timbers

Beaverton, OR

B02 total strength=482

attack=0.47 defense=0.23

fall league = OPL First Division U11, OPL Seco

alt names used:

WT B02 Copa TS – Placeholder

WT B02 Copa TS

Westside Timbers B02 Copa TS

Venues played:

Beaverton Cup BU11 Silver

Mt Hood Challenge BU11 11v11 Silver 1

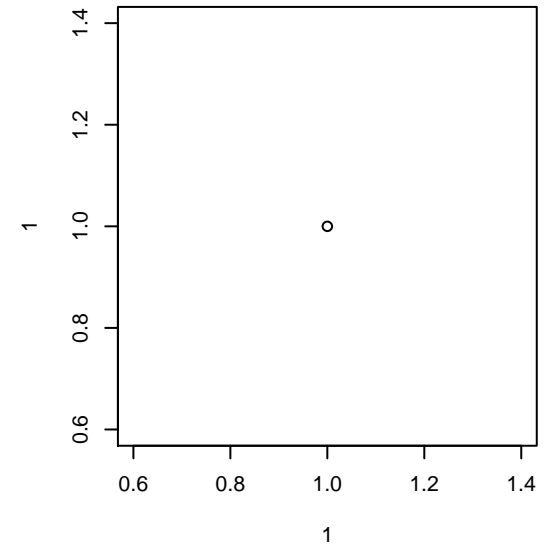
OPL Second Division U11

OPL First Division U11

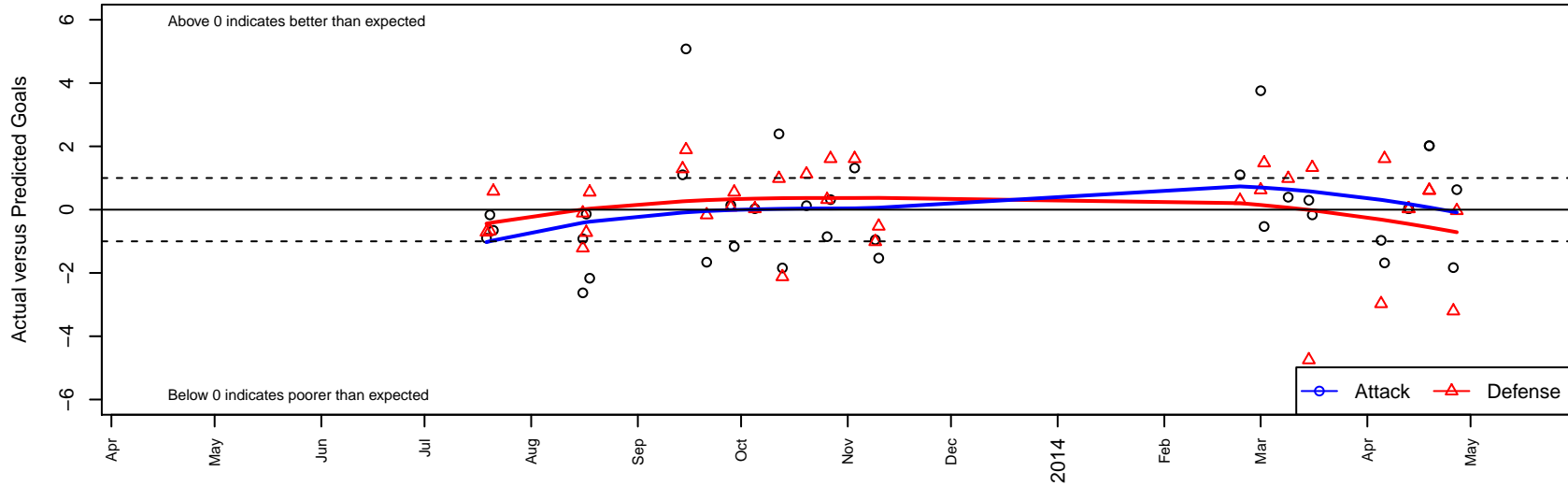
OPL Directors Cup Gold U11

Spr OYS B02 Spring Red

OYS Presidents Cup B02



Westside Timbers Copa TS B02
Dots are actual minus expected GF (blue circles) and GA (red triangles).
Blue line is smoothed change in attack strength. Red is smoothed change in defense strength.



| | date | home | | away | | venue | pred.home | pred.away |
|-------|-------------|---------------------------------------|----|---------------------------------------|---|----------------------------|------------------|------------------|
| 26904 | 2014-04-27 | Westside Timbers Copa TS B02 | 4 | Eastside Timbers Green B02 | 1 | OYS Presidents Cup B02 | 3.37 | 0.97 |
| 26695 | 2014-04-26 | Bend FC Timbers Red B02 | 5 | Westside Timbers Copa TS B02 | 0 | OYS Presidents Cup B02 | 1.80 | 1.83 |
| 26534 | 2014-04-19 | PCU Black B02 | 0 | Westside Timbers Copa TS B02 | 5 | OYS Presidents Cup B02 | 0.61 | 2.98 |
| 26537 | 2014-04-19 | PCU Black B02 | 0 | Westside Timbers Copa TS B02 | 5 | OYS Presidents Cup B02 | 0.61 | 2.98 |
| 26288 | 2014-04-13 | Westside Timbers Copa TS B02 | 2 | Capital FC Timbers Black –was Red B02 | 2 | OYS Presidents Cup B02 | 1.97 | 2.03 |
| 26291 | 2014-04-13 | Westside Timbers Copa TS B02 | 2 | Capital FC Timbers Black –was Red B02 | 2 | OYS Presidents Cup B02 | 1.97 | 2.03 |
| 25837 | 2014-04-06 | Westside Timbers Copa TS B02 | 0 | PCU Red B02 | 0 | Spr OYS B02 Spring Red | 1.68 | 1.61 |
| 25612 | 2014-04-05 | Capital FC Timbers Black –was Red B02 | 5 | Westside Timbers Copa TS B02 | 1 | Spr OYS B02 Spring Red | 2.03 | 1.97 |
| 24899 | 2014-03-16 | Westside Timbers Copa TS B02 | 3 | Washington Timbers Lime B02 | 0 | Spr OYS B02 Spring Red | 3.16 | 1.33 |
| 24555 | 2014-03-15 | LASC Guereros B02 | 10 | Westside Timbers Copa TS B02 | 1 | Spr OYS B02 Spring Red | 5.25 | 0.70 |
| 24202 | 2014-03-09 | BSC Portland Gold B02 | 0 | Westside Timbers Copa TS B02 | 4 | Spr OYS B02 Spring Red | 0.98 | 3.61 |
| 23663 | 2014-03-02 | Westside Timbers Copa TS B02 | 1 | Washington Timbers Forrest B02 | 0 | Spr OYS B02 Spring Red | 1.53 | 1.48 |
| 23401 | 2014-03-01 | Timber Barons B02 | 1 | Westside Timbers Copa TS B02 | 7 | Spr OYS B02 Spring Red | 1.62 | 3.24 |
| 23188 | 2014-02-23 | Westside Timbers Copa TS B02 | 3 | Eastside Timbers White B02 | 1 | Spr OYS B02 Spring Red | 1.90 | 1.29 |
| 17997 | 2013-11-10 | Washington Timbers Forrest B02 | 2 | Westside Timbers Copa TS B02 | 0 | OPL Directors Cup Gold U11 | 1.48 | 1.53 |
| 17588 | 2013-11-09 | Santos FC Mercury B02 | 3 | Westside Timbers Copa TS B02 | 1 | OPL Directors Cup Gold U11 | 1.99 | 1.95 |
| 17134 | 2013-11-03 | Westside Timbers Copa TS B02 | 3 | PCU Red B02 | 0 | OPL Directors Cup Gold U11 | 1.68 | 1.61 |
| 16164 | 2013-10-27 | PCU Red B02 | 0 | Westside Timbers Copa TS B02 | 2 | OPL First Division U11 | 1.61 | 1.68 |
| 15694 | 2013-10-26 | HSC United B02 | 1 | Westside Timbers Copa TS B02 | 2 | OPL First Division U11 | 1.32 | 2.85 |
| 15244 | 2013-10-20 | Westside Timbers Copa TS B02 | 3 | Foothills SC Celtic B02 | 0 | OPL First Division U11 | 2.87 | 1.13 |
| 14265 | 2013-10-13 | Westside Timbers Copa TS B02 | 0 | River Plate SC Tiburones B02 | 5 | OPL First Division U11 | 1.84 | 2.88 |
| 13717 | 2013-10-12 | Westside Timbers Copa TS B02 | 6 | BSC Portland Gold B02 | 0 | OPL First Division U11 | 3.61 | 0.98 |
| 12668 | 2013-10-05 | Westside Timbers Copa TS B02 | 2 | Capital FC Timbers Black –was Red B02 | 2 | OPL First Division U11 | 1.97 | 2.03 |
| 12257 | 2013-09-29 | Valley Futball Club Avengers B02 | 0 | Westside Timbers Copa TS B02 | 2 | OPL Second Division U11 | 0.55 | 3.17 |
| 11769 | 2013-09-28 | Westside Timbers Copa TS B02 | 3 | WUSC Manchester United White B02 | 1 | OPL Second Division U11 | 2.86 | 1.08 |
| 10801 | 2013-09-21 | THUSC Beryllium Green B02 | 1 | Westside Timbers Copa TS B02 | 3 | OPL Second Division U11 | 0.83 | 4.66 |
| 10369 | 2013-09-15 | Westside Timbers Copa TS B02 | 9 | Pacific FC Revolution B02 | 0 | OPL Second Division U11 | 3.92 | 1.89 |
| 9825 | 2013-09-14 | Westside Timbers Copa TS B02 | 3 | Eastside Timbers White B02 | 0 | OPL Second Division U11 | 1.90 | 1.29 |

| | date | home | | away | | venue | pred.home | pred.away |
|------|-------------|-----------------------------------|---|------------------------------|---|---------------------------------------|------------------|------------------|
| 7369 | 2013-08-18 | Valley Football Club Avengers B02 | 0 | Westside Timbers Copa TS B02 | 1 | Mt Hood Challenge BU11 11v11 Silver 1 | 0.55 | 3.17 |
| 6981 | 2013-08-17 | RSA Elite B02 | 3 | Westside Timbers Copa TS B02 | 2 | Mt Hood Challenge BU11 11v11 Silver 1 | 2.28 | 2.14 |
| 6737 | 2013-08-16 | Pacific FC Revolution B02 | 2 | Westside Timbers Copa TS B02 | 3 | Mt Hood Challenge BU11 11v11 Silver 1 | 1.89 | 3.92 |
| 6757 | 2013-08-16 | Westside Timbers Copa TS B02 | 2 | Clackamas Red B02 | 2 | Mt Hood Challenge BU11 11v11 Silver 1 | 4.63 | 0.79 |
| 4122 | 2013-07-21 | Westside Timbers Copa TS B02 | 2 | BSC HR Athletico B02 | 0 | Beaverton Cup BU11 Silver | 2.65 | 0.58 |
| 3631 | 2013-07-20 | Washington Timbers Lime B02 | 2 | Westside Timbers Copa TS B02 | 3 | Beaverton Cup BU11 Silver | 1.33 | 3.16 |
| 3397 | 2013-07-19 | Eastside Timbers White B02 | 2 | Westside Timbers Copa TS B02 | 1 | Beaverton Cup BU11 Silver | 1.29 | 1.90 |